

Epsom Hockey Club

August 2025 Newsletter



Not long now until the start of the season! Pre-season training and matches have started so check back into Teamo and sign up!

You may have also seen that subscriptions are now being allocated for payment. This is a time consuming process and there may be a few errors for which we apologise but it's quite a task! Just let Maj know what the issue is and he'll do his best to sort it out (membership@epsomhc.co.uk). The process has been started early so there is time to deal with changes and movement between categories.

For those that attended the AGM and/or read the June Newsletter, you'll know why subs have had to go up this year. England Hockey has doubled (!) their affiliation fee and although we have tried to absorb some of this increase, we are also facing rising running costs and of course, there is a new clubhouse to build. Our rates are very much in line with other local clubs and in certain cases 30% less.

We have a strict "no pay - no play" policy so please be mindful of this and make sure there are no debts left over from last season.

We want to make hockey accessible for all and if you have genuine issues with covering payments, please reach out to Alex Waine, who will be happy to discuss individual cases in complete confidence (treasurer.hockey@spsomsportsclub.co.uk).

Epsom Hockey Club V Epsom Cricket Club
Fundraising Cricket Match!

Sunday 31st August
1pm Start

**@ Schnadhorst Memorial Ground,
Woodcote Rd, KT18 7QP**

EPSOM HOCKEY **EPSOM C.C.**

Come and support! Join us for a fun-filled afternoon!
Mixed Cricket Match - 30 overs
Bar will be open!

Come along and watch this thrilling 30-over mixed cricket match on Sunday 31st August @ 1pm at Schnadhorst Memorial Ground, Woodcote Rd, between Epsom Hockey Club and Epsom Cricket Club. The bar will of course be open. Come and support!

Please sign up for Club Day on Teamo

EPSOM HOCKEY **CLUB DAY**
SATURDAY 6TH SEPTEMBER

Come and join us for a fun day of hockey!

Hockey Schedule

- 09:00- 12:00
Men's and Women's 7 a side Tournament & Mixed Walking Hockey
- 12:15
Women's 1s v Oxted
- 13:45
Men's 1s v Tunbridge Wells
- 15:15
Women's 2s v Surbiton

WALKING HOCKEY **MIXED HOCKEY**

KIT SALE **BBQ** **MIS, WIS & W2S MATCHES**

Tickets on Teamo **Junior club day Sun 7 Sept**

@ OLD SCHOOLS LANE

There is a £5 match fee and food and drink on sale throughout the day. Please indicate that you can attend via Teamo so that we have an idea of numbers for catering purposes.

www.epsomhc.co.uk



Epsom Hockey Club



Clubhouse Build Update

Following the selection of a contractor, we are full steam ahead on finalising the contractual documentation, discharging pre-commencement planning conditions, agreeing site set-up and finalising the specifics of the build program. Full details on access, welfare provision, movement around the site etc to follow in due course, we appreciate that there will be some disruption and thank you in advance for accepting some short-term pain for major long-term benefit.

There is a lot to do in the next 4 weeks or so and you will start to see changes happening around the site as we get ready to put the first spade in the ground, which will be a massive moment for the club and one we should all be proud of achieving

Your donations are still needed to ensure that we get the best clubhouse possible - PLEASE PLEASE do give generously and we look forward to receiving your support in all our fundraising initiatives over the coming seasons.

Donations can be made via the just giving page (there is also a link on the hockey club website).

<https://www.justgiving.com/campaign/clubhouse>

As always any fundraising ideas, sponsorship or larger donations are gratefully received - don't be shy! Please drop Emma a line at chair@epsomhc.co.uk

300 Club

Don't forget to sign up to the 300 club. It's so easy to do , helps the club and gives you the chance of a cash prize!

As we look to the future we want to build up to 300 entries per month hence the name. To enter either simply set up a standing order for £10 per month or £120 annually

Payee: Epsom HC 300 Club

Account number: 51808762

Sort code: 23-05-80

Reference (300, first name last name)



Sponsorship

We are keen to explore different avenues of revenue and really want to actively involve the local community. With over 1,200 members the footfall at OSL is ever growing and there are lots of opportunities for linking up with local businesses. Please get in touch if this is something which interest you either in growing your own business or someone you may know.

Contact: James (Bomber) Harris - **vicechair@epsomhc.co.uk**



Epsom Hockey Club



Pre season is in fully swing - please sign up on Teamo so that coaches can see how many will be attending to plan sessions accordingly.

Pre-Season Training Schedule

@ Old Schools Lane

WORK HARD, ACHIEVE GREATNESS

MONDAY	7:30-9:00 - W 1 - 3 Starting 4 th Aug
TUESDAY	7:45-9:30 - Men's Performance Starting 5 th Aug
WEDNESDAY	7:30-9:00 - Women's Performance 7:45-9:30 - Men's Performance Starting 13 th Aug
THURSDAY	7:45-9:30 - Men's Performance on 7 th Aug ONLY 7:30-9:00pm - W4 - 7 s Starting 14 th Aug 7:30-9:00pm - Men's Club Starting 14 th Aug
FRIDAY	7:30-9:00pm - Mixed Hockey

A few other reminders.....

With the season almost upon us, please remember the preference is that OSL is a dog free area. However, we do realise that it is not always practical to leave our furry friends home alone. If you do need to bring them, please can you keep them on a lead at all times, well away from the spectator and pitch areas and please clear up after your pooch.



Please update Teamo with your vehicle reg, colour and make - there are cameras installed at Woodcote Road so if you park there and haven't registered your car, you could with a fine to pay.

If you've changed vehicles or have new drivers in the family, don't forget to add these!

Keep us updated on your news and match results - please send photos and news to our Social Media guru, Natalia Anda on communications@epsomhc.co.uk.

Don't forget to tag us on any hockey posts on instagram

@epsomhc
@epsomhcjuniors



Who's Who and Who's New?



We are delighted to announce the appointment of Henry Emmett as Women's 1s Coach and Tom Dixon as Women's 2s Coach for the upcoming season. They will be supported by Richard Organ, former England Women's Indoor coach, who brings a wealth of experience and technical expertise as we work towards building a strong foundation on our journey to the National League.

A former Scotland U21 international goalkeeper, Henry has played National League hockey in both England and France. He brings a high-performance mindset and a breadth of coaching experience from working in women's and junior hockey across France, Australia, and the UK.

Tom brings valuable coaching experience from top schools in South Africa and has already been making a strong impact since joining Epsom HC a couple of months ago. His energy and commitment to player development, combined with Henry's elite-level insight, promise to foster a unified, competitive, and ambitious environment across both squads.

We are extremely lucky to retain Spuggie as coach in the Women's Section and she has expanded her role to include all teams from Women's 3s to Women's 7s. Last season's recipient of the "Be more Swight" Award, Spuggie is a much loved and valued coach across the Women's and Junior Sections.

We are very excited for the season ahead and confident that this coaching team will inspire progress, growth, and success throughout the club.

Community Outreach



You may not be aware but Epsom Hockey Club runs a school outreach programme. We provide weekly coaching sessions to schools to give more children the opportunity to play hockey, encourage them to get active and make friends through sport. We currently work with three local state schools - Rosebery, Ewell Grove and Glyn, and run weekly sessions at each school. This has inspired many of the pupils to join our club, or has kept pre-existing members engaged with the club, expanding the size of our community.

We are looking to expand this programme but in order to fund it, we are reliant on grants and subsidies.

A huge thank you to **Toyota** who have recently made a generous donation of £2,000 towards our outreach programme.



GENERAL COMMITTEE 2025-26 SEASON

Chair	Emma Andersen
Vice-Chair	James Harris
Secretary	Sue Everest
Treasurer	Alex Waine
Men's Captain	AJ Cerqueti
Womens' Co-Captain	Sarah Orr & Becky Harris
Junior Co-Chair	Torben Andersen & Mark Sydenham
Welfare Officer	Nita Underwood
Membership Secretary	Majid Azam
Events Manager	Lucy Jalland
Social Media Manager	Natalia Anda
Website Manager	Robin White
Facilities Manager	Duncan Holmes
Sports Club Hockey Director	Simon Everest
Director of Hockey	Mary Booth



Club News



Well done to all our members who have recently collected exam results - we wish you all well in your next ventures!



Congratulations to our European Champions !!!!



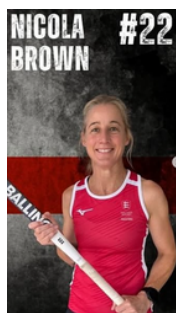


LONDON HOCKEY

Top Goalscorers 2024-25

M	Player	Club	FG	PC	PS	Total
1	Brendan DU PREEZ	Merton	21	13	0	34
2	Lawrence MARSH	Epsom	26	5	2	33
3	Kevlin GRANT	Barkham	19	9	0	28
4	John WIDHAM	London Royals	23	2	1	26
Gr: #players						24

Congrats to Lawrence Marsh - 2nd top male scorer in the London Leagues last season !t



Congratulations to Nicola Brown and the England Masters Women O45s team who won the 4 Nations in Glasgow



Well done to the Epsom players representing various Masters Teams at the European Champs in Nottingham

Pat Gabbett

We received the sad news that one of our longest standing members, Pat Gabbett, recently passed away.

Pat was a member of the Hockey Club for over 50 years and was a generous, enthusiastic and much loved member of our community. He was always willing to help the club and others out and was heavily involved in the construction of the Woodcote pavilion.

In more recent times, he was regularly to be found helping out with umpiring, supporting events (including race nights) and catching up with friends both pitchside and in the bar.

We send our deepest condolences to his wife Joan, his family and friends at this time.

Congratulations to Tom and Emma on tying the knot!





Results:

What a great game at OSL on Saturday. Ended honours even with a 3-3 draw. Hard fought but a great social atmosphere after and a great start to the fundraising for the season. Well played all! An extra special thanks to our awesome umpires - can't play without you.

Thank you! ❤️🏏

Saturday 23rd August 2025

Epsom U18s v Epsom M1s



Pre-season v Durham Uni

A great game of hockey saw the EHC Men's 1XI come out on top of this tight affair.

An energetic game with lots of positives to take forward into the new season!

Many thanks to @durhamuniversityhc for the amazing game and we wish them all the best for the upcoming season.

- | | |
|--------------------|----------------------|
| 1. Sam Nash | 10. Carsten Andersen |
| 2. Alex Thompson | 11. Jack Underwood |
| 3. Niall Doidge | 12. Sam Druce |
| 4. Jake Davies | 13. Ollie Shindler |
| 5. Thomas Davidson | 14. Sam Prouse |
| 6. Jack Turnbull | 15. Ben Symons |
| 7. Che Robinson | 16. Freddie Shail |
| 8. Josh Harris | 17. Adam Barker |
| 9. Tom Dixon | |

EPSOM MEN'S 1XI VS DURHAM UNI 1XI



Junior Section News

Sign up on Teamo!



1ST TEAM TAKE OVER!

Open junior hockey session with the Men's and Ladies 1st team

Friday 29th August

U12 and below 6-7

U14 and above 7-8

@Old Schools Lane

BBQ and Drinks available

All Juniors Welcome!